

SmartLF Cx+ 40

INNOVATION IN WIDE FORMAT SCANNERS AND SOFTWARE



Wide Format Scanners for High Productivity Technical Imaging

SUITABLE FOR:
TECHNICAL & CAD DRAWING OFFICES, SCANNING
& COPY SERVICE PROFESSIONALS, AEC, GIS

The Colortrac SmartLF Cx+ 40 is a hard-working, robust and reliable high volume production scanner whose efficient operation, image quality, scanning speed and practical software gets more documents scanned to the highest quality every hour.



NEW IMPROVED MODEL

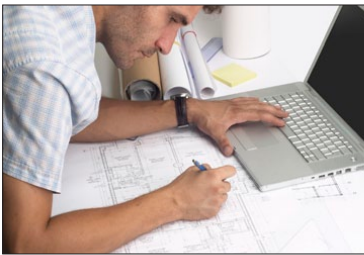
Capturing wide format technical documents in bulk just got easier. New improvements to the best-selling Colortrac SmartLF Cx+ 40 makes everyday batch scanning tasks now more efficient, more productive.

Key Features

HIGH VOLUME PRODUCTION SCANNER

- ◆ 600dpi optical with 3600dpi maximum resolution
- ◆ 40in image width -suits A0, E and ARCH E-size scans
- ◆ **NEW** Magnetic document guide for easier, more positive loading
- ◆ **NEW** Document Return Guide for easier document collection
- ◆ **NEW** professional MFP stand for scan-to-copy workstation
- ◆ **NEW** Includes SmartWorks EZ SCAN/COPY/EMAIL software
- ◆ High speed scans in monochrome, grayscale and color
- ◆ Sharp, fine image detail - superb black & white capture
- ◆ CIS¹ technology with extra long-life, instant-on LED² illumination
- ◆ Clean black & white images - excellent grayscale capture
- ◆ Reliable paper feed from advanced 2+4 all-wheel-drive
- ◆ Scans media up to 0.08in / 2mm -suits ALL technical documents
- ◆ On-site upgrade from monochrome to color and express color
- ◆ Fast, high quality scans from power-on, no warm-up, no waiting!
- ◆ Compact, space saving design with low power consumption
- ◆ Low maintenance costs, easy USB2 connectivity

Based on a proven and best selling CIS (Contact Image Sensor) solution, the SmartLF Cx+ 40 is a reliable 40in wide large format scanner ideally suited to the demanding and difficult volume scanning needs of AEC, CAD, GIS and service bureau professionals. With true 600dpi optical resolution, the new SmartLF Cx+ 40 has more than enough resolving power for any large format scanning job.



CAD and Technical Drawings

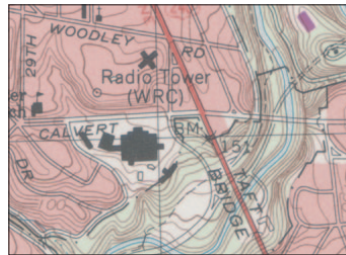


Image Enhancement

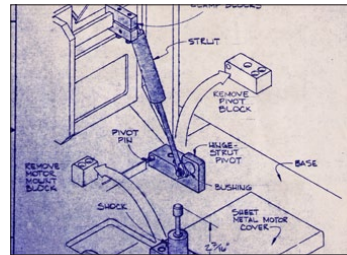
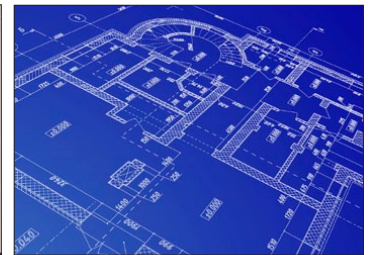
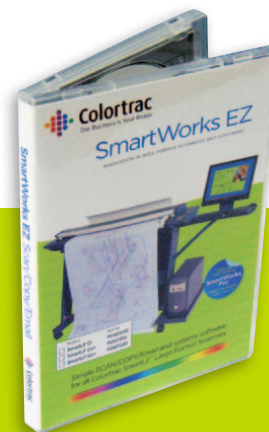


Image Restoration



Archived Blueprints

All SmartLF scanners are available in three affordable specification levels: monochrome, color and express color, (m, c, e). m and c models can be easily upgraded via unique email process if requirements change.



SmartWorks EZ software
 Everything you need is IN THE BOX!

Because you need large format scanning solutions that work for you:

SmartLF Cx+ 40 scanners include SmartWorks EZ SCAN/COPY/EMAIL software that combines wide format scanning and copying in one very easy to use program and has full compatibility with wide format printers through standard Windows drivers.

SmartWorks EZ is optimized for use with touchscreen monitors using a simple, intuitive user interface suitable for general office use.

Colortrac recommends:

SmartWorks Pro SCAN & COPY software for more demanding users.

The professional option with Colortrac's 'scan once' workflow for unrivalled control & productivity.

Includes Intelligent Adaptive Thresholding (IAT) - voted "Best in Class" and receiving 4.5 Star OUTSTANDING rating by BERTL.

Specifications

	Cx+ 40m	Cx+ 40c	Cx+ 40e
Upgradeable	mono/grayscale m → c m → e	+Color c → e	+Express Color N/A
Optical Resolution	600dpi	600dpi	600dpi
Interpolated Resolution	3600dpi	3600dpi	3600dpi
Max Scan Width	40in (101.6cm)	40in (101.6cm)	40in (101.6cm)
Max Media Width	44in (111.8cm)	44in (111.8cm)	44in (111.8cm)
Max Media Thickness	0.08in (2mm)	0.08in (2mm)	0.08in (2mm)
Accuracy	+/-0.1% +/-1 pixel	+/-0.1% +/-1 pixel	+/-0.1% +/-1 pixel
Imaging Technology	5x Contact Image Sensors (CIS)	5x Contact Image Sensors (CIS)	5x Contact Image Sensors (CIS)
Data Capture (color/grayscale)	16-bit	48-bit/16-bit	48-bit/16-bit
Color Space	N/A	Normalised/RAW RGB	Normalised/RAW RGB
Scan Speed 1-bit mono (in/sec) @200dpi	9.00	9.00	9.00
Scan Speed 8-bit grayscale (in/sec) @200dpi	9.00	9.00	9.00
Scan speed 24-bit color (in/sec) @200dpi	N/A	0.75	3.00
Paper Path	Face-down, front entry, rear exit		
Interface	High Speed USB 2.0/Windows Image Acquisition (WIA)/Still Image Interface (STI)		
Power Requirements	Internal power supply 100-240 VAC autosensing +/-10%, 50-60Hz Scanner power consumption: 27Wh (scanning) / 17Wh (standby)		
Weight & Dimensions (WxHxD)	73lbs (33 kg)	54.8 x 6.7 x 13in (140 x 17 x 33cm)	
Host Platform	Windows XP, Windows Vista, Windows 7, 32-bit and 64-bit architectures		
Certifications	CB, CE, FCC, UL, RoHS.		
Included Software	SmartWorks EZ SCAN/COPY/EMAIL software - supports TIFF, JPEG, PNG & PDF; WIA/STI interface		
Optional Software	SmartWorks Pro SCAN & COPY software - industry leading, professional scanning and color-copying software		
Accessories	Floor stand, Paper catch basket, Document return guide, Universal Repro Stand, PC and monitor mounting kit (floor stand required)		

¹CIS (Contact Image Sensor). ²Unlike fluorescent tubes, LEDs only come on when scanning and have an estimated working-life of 50,000 hours or 6 years scanning 24/7.

[For full details of host system requirements please go to: http://www.colortrac.com/support/system_requirements.htm.] Colortrac Ltd makes no warranty of any kind with respect to the information contained in this document and reserves the right to change specifications without notice. Colortrac and Smart LF[®] are trademarks of Colortrac Ltd. All other trademarks are the property of their respective owners. Copyright © 2011 Colortrac Ltd. COLORTRAC SMARTLF WIDE FORMAT SCANNERS ARE DESIGNED AND MANUFACTURED BY COLORTRAC.

VERSION: 110311

YOUR COLORTRAC STOCKIST

Colortrac Limited

COLORTRAC HQ AND FACTORY
 3-5 Brunel Court, Burrell Road, St Ives,
 Cambs PE27 3LW, UK
 Tel: +44 1480 464618
 Fax: +44 1480 464620

Colortrac Inc.

4431-A Brookfield Corporate Drive
 Chantilly, Virginia 20151, USA
 Tel: +1 703 717 5631
 Fax: +1 703 717 5361

Colortrac Japan

12th floor, 1203
 Yokohama Creation Square,
 5-1 Sakae-Cho
 Kanagawa-Ku, Yokohama-Shi
 Kanagawa-Ken
 221-0052 Japan
 Tel: +81(0)45 548 6991
 Fax: +81(0)45 548 6992

Colortrac Limited (Beijing)

Room 1208, ZhongGuanCun Technology Development
 Building C, No.34 Zhong Guan Cun South Street
 HaiDian District, Beijing 100081, P.R. China
 Tel: +86 (0) 10 62124936
 Fax: +86 (0) 10 62124770

www.colortrac.com